

# Computerised Double Jersey Jacquard Transfer Machine.

**V-LEC4BT**  
**Electronic Double Knit Machine Series**



patent pending

## V-LEC4BT :

- "SS" actuation system for individual needle selection on the cylinder.
- RDS cam system for quick and easy changes on the dial.
- New synchronised and delayed camming system allowing Lycra fabrics to be produced to the highest quality, whether with cotton or synthetic yarns.

### Standard Specification:

<b>Diameter</b>	: 30" 34" 36" 38"
<b>No of Ends</b>	: 32 36 38 40
<b>No of Feeds</b>	: [30"] 32 knit feeders + 16 C-D transfer feeders [34"] 36 knit feeders + 16 C-D transfer feeders [36"] 38 knit feeders + 19 C-D transfer feeders [38"] 40 knit feeders + 20 C-D transfer feeders
<b>Gauge</b>	: 12g - 18g
<b>Frame</b>	: V" frame (single bed for high speed operation), Quick change facility cylinder/dial
<b>Drive</b>	: AC Inverter with 5.5Kw Motor.
<b>Creel</b>	: Fully Tubed Double Tie free standing Creel.
<b>Yarn Feed System</b>	: SFE (2 units/knit feeder) 1 ring YS2 (lunit/F) 1 ring/2 tapes.
<b>Yarn supplying device</b>	: Provision for side creel without creel.
<b>Cylinder Cams</b>	: Exchange closed cams, provision for 4 tracks, knit, tuck and miss cams available.
<b>Yarn carrier</b>	: Individual block type yarn carriers with a corner hole.
<b>Size ring</b>	: Normal fabric spreader.
<b>Oiling device</b>	: Projectile 419.
<b>Latch opener</b>	: Blade type latch openers.
<b>Pattern Controller</b>	: FMC-40 (memory 12MW).
<b>Auxiliary equipment</b>	: Operation panel (with colour LCD touch panel & built-in USB connector), Cooling fans (for the cylinder actuators).

### Optional Extras:

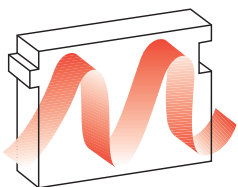
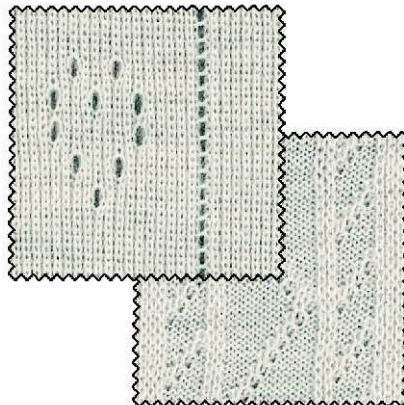
- Overhead bobbin rack.
- Large take-up on high legs (Max. fabric roll dia. 850mm).
- "OD3" open width frame for crease free fabrics.
- ACT-4 motorized automatic take-up (for soft winding, 3 rubber-coated rolls with split rolls, anti-reverse-rotation mechanism for cloth roll).
- Cams for coarse-stitch.
- Cams for delayed timing.
- Parts for elastomeric yarn plating.
- Parts for Interlock gating.
- CADRATEX fabric spreader.
- MEMMINGER-IRO Pulsonic oiler.
- Auto-oiler.
- Lint fans.
- Top stop-motions.
- Bottom stop-motions with slub catcher.
- MKS Design System pattern preparation system
- Cylinder/dial change tool.

### Fabric Potential:

Rib mesh transfer, Mock links, Rib jacquard transfer,

### Special Features:

- **High performance S.S. actuators.**  
The high performance and reliable S.S. actuator allows stable 3 positions (Knit, Tuck and Welt) selection for individual needles.
- **2-race x 4 positions RDS cam system for the dial.**  
The cams can be set to 4 positions (Knit, Tuck, Welt and Support) and thus capable of knitting various kinds of fabrics.
- **Blade type latch opener.**  
This type of latch opener prevents fancy yarns such as fluffy yarns and slub yarns from being caught by the needles during knitting. Flip-up mechanism is employed to avoid damage to the needles.
- **Varieties of fabrics using transfer function.**  
Rib mesh transfer - typical transfer fabrics, Mock links, and jacquard transfer fabrics can be knitted.
- **Colour LCD touch panel for operation panel.**  
The high - luminance and clear colour LCD using user-friendly icons for each function greatly reduces the chance of making mistakes in entering and confirming machine data,striper data,etc.



**monarch**  
unique fabric solutions

### England

Monarch Knitting Machinery UK Ltd  
Boston Road, Beaumont Leys, Leicester LE4 1BG  
England  
Tel: (0116) 235 1502. Fax: (0116) 236 7201  
email: general@monarchknitting.co.uk  
www.monarchknitting.co.uk



The above specification may be changed without notice. \*Conditions of sales may vary from country to country.  
\* All information in this brochure is given in good faith but without warranty.

Aug 2013

# V-LEC4BT